



Compagnie Aérienne Internationale

www.cai-holding.com

mail : info@cai-holding.com



BRAND NEW A320-232 FOR SALE



C.A.I. Siège Social - 114 bis rue Michel Ange 75016 PARIS France

RCS Paris - SIRET 794 830 653 00018 - APE 4614Z **Tel : +33-1-3956 1438 FAX : +33-1-3956 5763**



Compagnie Aérienne Internationale

www.cai-holding.com

mail : info@cai-holding.com



NEW A320-200
AVAILABLE IMMEDIATELY
FOR PURCHASE

Looking fwd



Overhead bins RHS



C.A.I. Siège Social - 114 bis rue Michel Ange 75016 PARIS France

RCS Paris - SIRET 794 830 653 00018 - APE 4614Z **Tel : +33-1-3956 1438 FAX : +33-1-3956 5763**



Compagnie Aérienne Internationale

www.cai-holding.com

mail : info@cai-holding.com



General view and fwd Port side

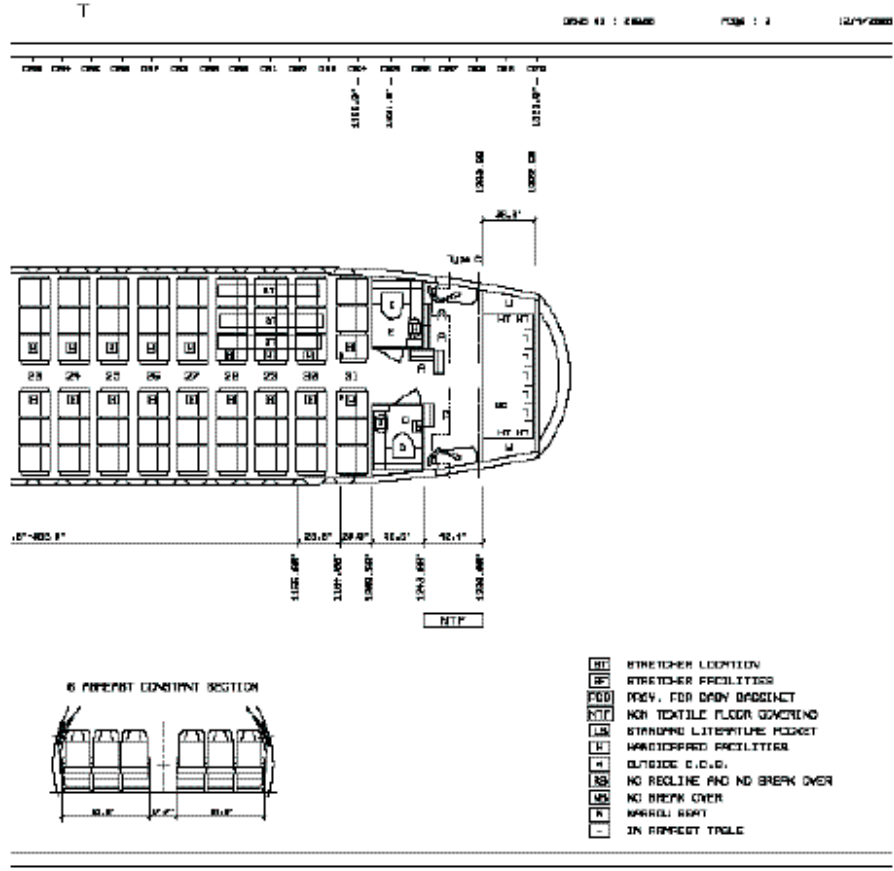
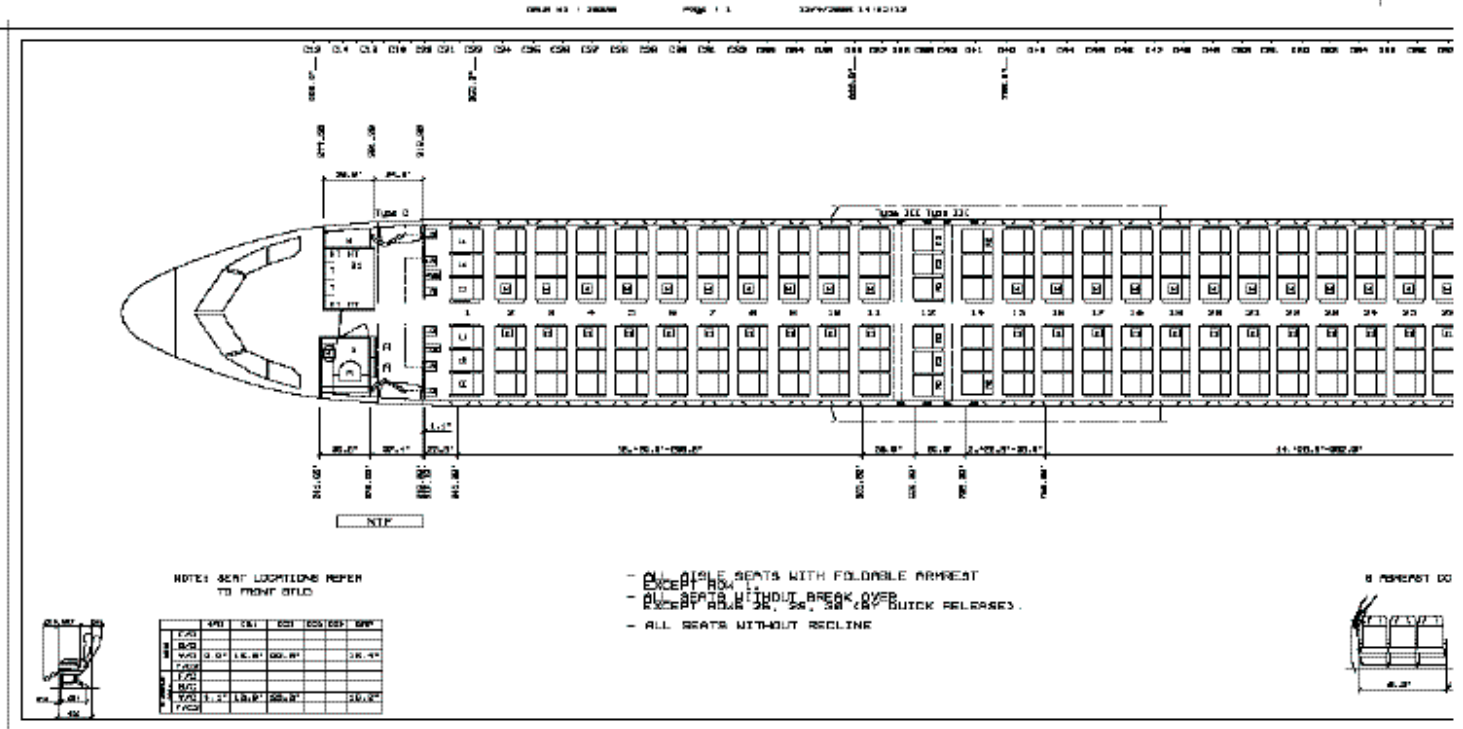


Rear galley





Aircraft LOPA:





Compagnie Aérienne Internationale



www.cai-holding.com

mail : info@cai-holding.com

TOTAL TIME: NEW
Noise Abatement Compliance: Stage III iaw.

WEIGHT & FUEL DATA: (as of 12.06.2009)
Maximum Taxi Weight: 73900 kg
Maximum Take-Off Weight: 73500 kg
Maximum Landing Weight: 64500 kg
Maximum Zero Fuel Weight: 61000 kg
Operational Empty Weight: TBD
Maximum Usable Fuel Capacity: 19088 kg

INTERIOR: ICAO Annex 16 Interior
Arrangement: 174 All
Tourist
Lavatory: 3
Galley (with chiller): G1, G5 (Bucher), with ATLAS Boxes & Trolleys

A 25 - Equipment & Furnishing	QTY	Manufacturer	Model /Part Number
Seats Tourist (Leather Covers)	174	Recaro	3510
Galley 1 (chilled)	1	Bucher	1391000
Galley 5 (chilled)	1	Bucher	1395000
Ovens	4	Sell	8203-11-0000

MAINTENANCE: The Operator's approved Maintenance Program is conform to the Manufacturer's MPD. Base Check interval: 6000 FH, 4500 FC, 20 Months (whichever comes first)
Line Check interval: 600 FH, 750 FC, 100 Days (whichever comes first).
Last Base Maintenance Check performed: N/A
Next Due Base Maintenance Check: 1C at 6.000 FH or 4.500 FC or Oct. 2010

C.A.I. Siège Social - 114 bis rue Michel Ange 75016 PARIS France

RCS Paris - SIRET 794 830 653 00018 - APE 4614Z **Tel : +33-1-3956 1438 FAX : +33-1-3956 5763**



Compagnie Aéronautique Internationale



www.cai-holding.com

mail : info@cai-holding.com

ENGINES:

Position #1 Position #2
Engine Model: CFM56-5B4/P CFM56-5B4/P
Thrust Rate 27K lbs 27K lbs
Serial Number: TBD TBD
Total Hours: TSN 0 TSN 0
Total Cycles: TSN 0 TSN 0
Last SV: N/A N/A
TSLSV: Manufacture Manufacture
1st LLP Limiter: Several LLP's at 20.000 CYC
Remaining CYC of 1st Limiter: 20.000 CYC 20.000 CYC

LANDING

GEAR DATA:

Part No. MFG Date CYC since New
Nose Landing Gear: NA28008-10 March 2009 0 CYC
Left Main Landing Gear: 201581001 March 2009 0 CYC
Right Main Landing Gear: 201581002 March 2009 0 CYC
Interval for LDG OH: 20.000 CYC or 10 Years (whichever comes first)
Remaining CYC to/ Date of OH: 20.000 CYC or March 2019
BRAKES Manufacture: Messier-Bugatti, Part No. C20225410-1

AIRBORNE

AUXILIARY

POWER UNIT:

Manufacturer: Honeywell
Model: 131-9A
Part Number: 3800708-1
Serial Number: TBD
Total APU Hours: 0 APU Hours
Total APU CYC: 0 APU Cycles
APU LLP OH Interval: 30.000 APU Cycles
Rem. APU Cycles to 1st Limiter: 30.000 APU Cycles

Specification and photos are not contractual and are subject to verification upon inspection

PLEASE NOTE: AIRCRAFT SPECIFICATIONS SUBJECT TO VERIFICATION UPON INSPECTION. WE DO NOT ACCEPT ANY LIABILITY FOR AIRCRAFT DEFECTS, HISTORY OR TECHNICAL RECORD ERRORS. IT IS THE BUYERS RESPONSIBILITY TO INDEPENDENTLY VERIFY THE AIRCRAFT AND COMPONENT HISTORY.

C.A.I. Siège Social - 114 bis rue Michel Ange 75016 PARIS France

RCS Paris - SIRET 794 830 653 00018 - APE 4614Z **Tel : +33-1-3956 1438 FAX : +33-1-3956 5763**